

PATIENT INFORMATION:

- Query Patient information from any DICOM modality or DICOM server or DICOM Workstation or Modality worklist server.
- Receive worklist based on preferences
- Eg: Entire worklist for the day, worklist only for the modality, worklist only for the selected IP.
- Search parameters include patient ID, Name Sex, Study Date, Accession Number and Modality
- Manually enter patient information

STUDY MANAGER:

- Set Study Date, time, Accession #, and ID
- Set Patient Series Date, Series time, Modality, and Description
- Auto generate patient ID, study ID and series UID

IMAGING FEATURES:

- Display images in full size, 1x1, 2x2, 3x3, 4x4, 5x5, 6x6 layouts.
- Image manipulation tools include brightness, contrast, cropping, invert image, text and arrow annotations, rotate image etc.
- Deskew image when scanning images.
- Merge selected images and convert to AVI.
- Edit DICOM attributes for DICOM images.

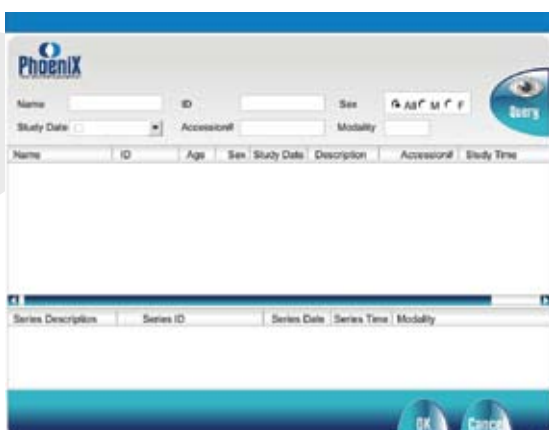


IMAGE ACQUISITION:

- Capture single frame and multi frame images using a grabber card from any non-DICOM modality including Endoscope, Ultrasound, CT, MRI, C-Arm, Cathlab, etc.
- Scan documents like physician reports, tech notes, etc. by connecting TWAIN compliant scanners.
- Scan film by connecting to film digitizer (VIDAR).
- Import JPG, DICOM files and AVI files from a selected folder in the local drive.
- Import images from TWAIN complaint cameras.
- Footswitch Integration for capturing images/sequences using a grabber card.

PREFERENCES:

- Add Multiple DICOM sources for store server, query server and worklist server.
- Set default input and output directory.
- Set frequency for auto capturing images.
- Set default DICOM query server, DICOM store server and DICOM worklist server.
- Allows only authorized users to make the preference changes.

DISTRIBUTION OPTIONS:

- Send the selected images and AVI files to the set DICOM node as DICOM files.
- Write the selected images and AVI files onto a CD/DVD as DICOM files with an embedded viewer.
- Store the selected images and AVI files in the desired location of the local drive as DICOM files or DICOMDIR

SYSTEM REQUIREMENTS:

Operating System: Windows XP Professional (SP2)
Processing Power: Pentium IV 2.0 MHz or more.
Memory: 512 MB RAM or more.
Hard Disk Space: 50 MB of Free Disk Space for application and image files.
Network Interface: Standard network connection to DICOM devices.
Scanners: Standard TWAIN compliant scanning devices.



CORPORATE OFFICE

ASHVA TECHNOLOGIES PVT. LTD.

#15, ARK Colony,
'Urmilla House', - 1st Floor, Eldams Road, Alwarpet, Chennai -
600 018. India.
Tel : 91 - 44 - 4208 8867 / 76, Fax : 91- 44 - 42088897

ASHVA TECHNOLOGIES LTD.
505 Hwy 169 N,
Waterford Park, Suite 300,
Plymouth, MN 55441, U.S.A
Tel: 763 746 9223
Fax: 763 746 9224
Email: marketing@ashvatech.com

ASHVA TECHNOLOGIES.

Sdn. Bhd. (742382-M)
No. 104 A, Jalan SS 24/2,
Taman Megah, 47301 Petaling Jaya,
Selangor Darul Ehsan, Malaysia.
H/P: (6017) 2340805

www.ashva.com